

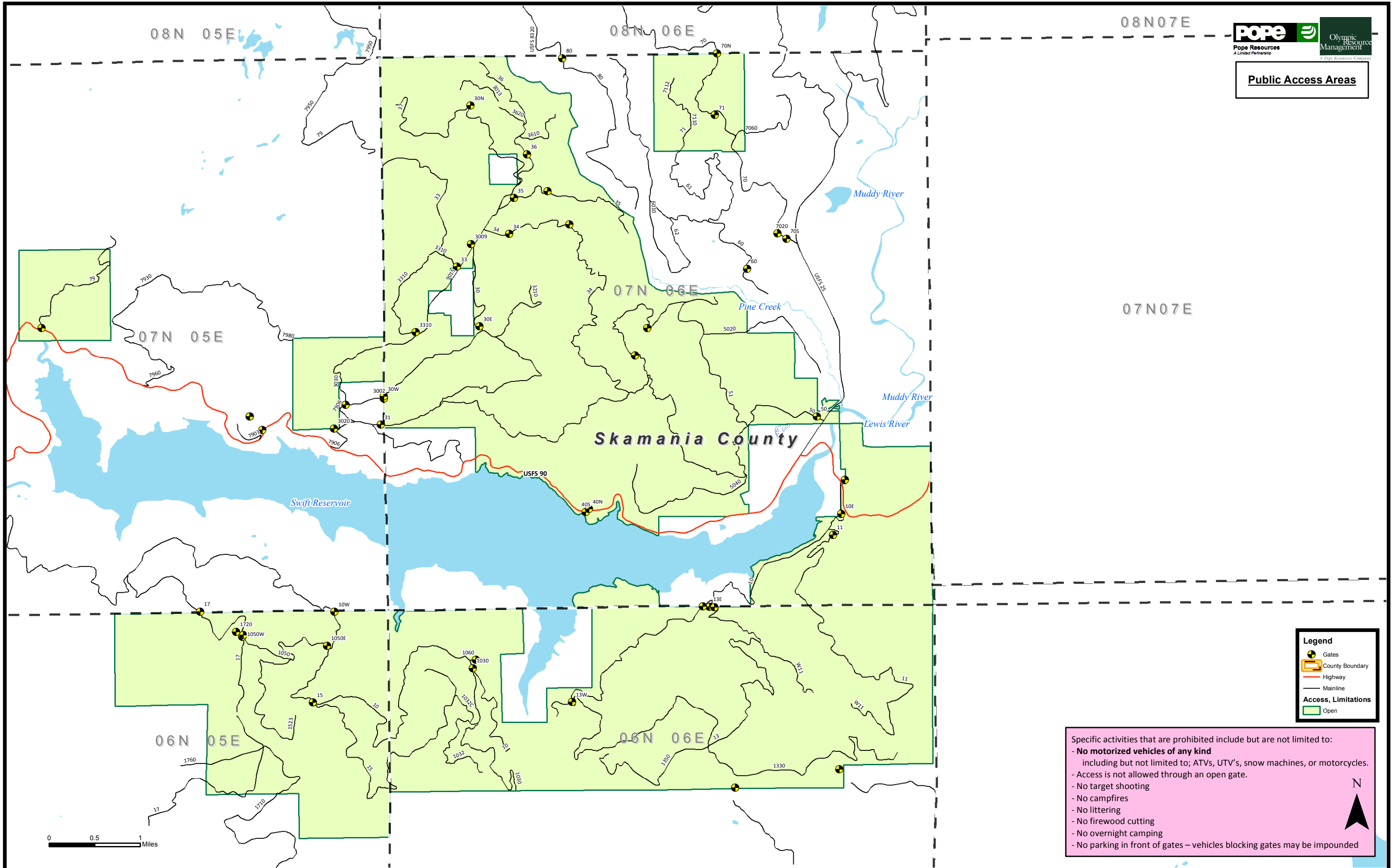
08N 05E

08N 06E

08N07E



Public Access Areas



07N 05E

07N 06E

07N07E

Skamania County

Swift Reservoir

Muddy River

Pine Creek

Muddy River

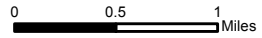
Lewis River

USFS 90

USFS 25

06N 05E

06N 06E



Legend

- Gates
- County Boundary
- Highway
- Mainline
- Access, Limitations
- Open

Specific activities that are prohibited include but are not limited to:

- **No motorized vehicles of any kind** including but not limited to; ATVs, UTV's, snow machines, or motorcycles.
- Access is not allowed through an open gate.
- No target shooting
- No campfires
- No littering
- No firewood cutting
- No overnight camping
- No parking in front of gates – vehicles blocking gates may be impounded

